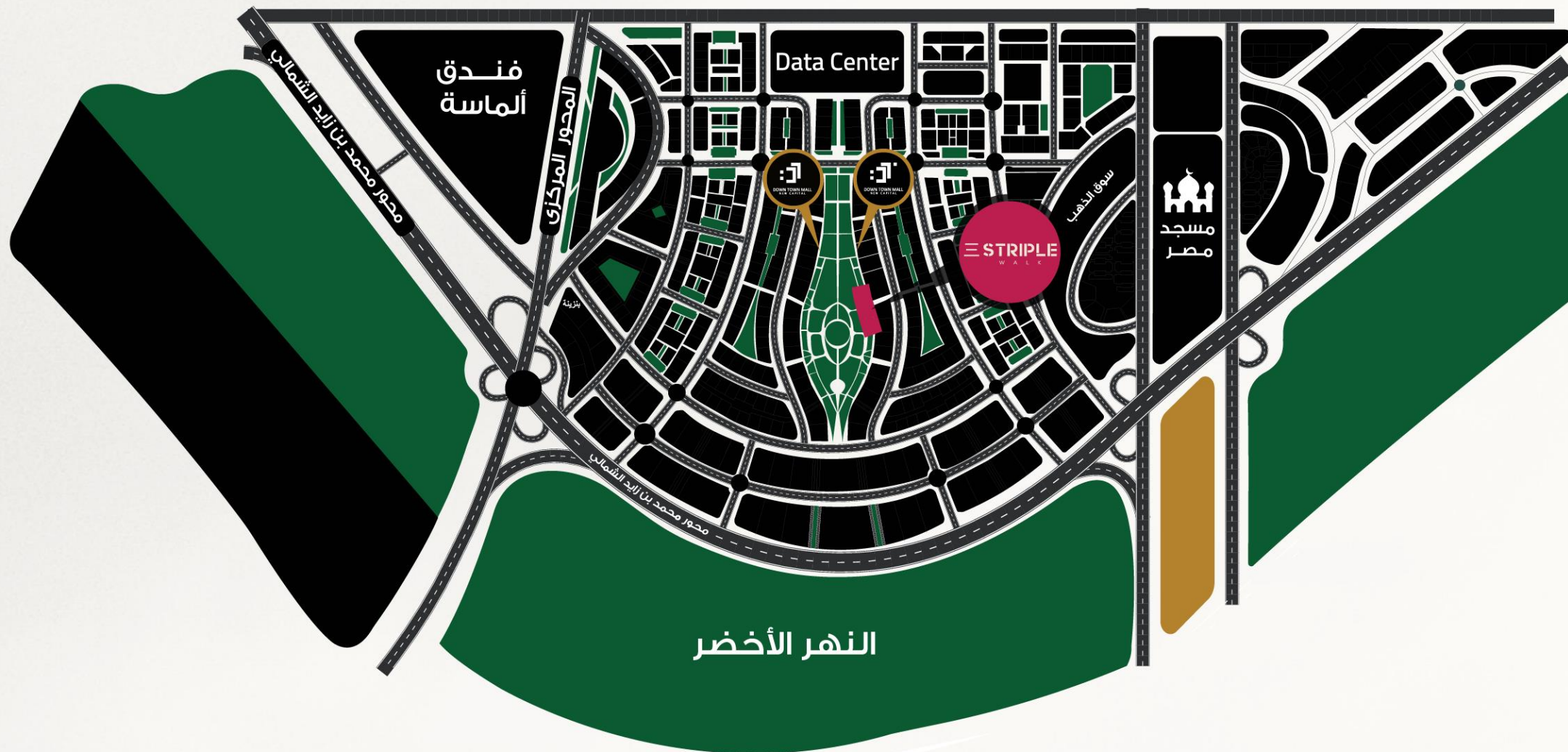


STRIPLE

W A L K

D O W N T O W N



The first strip center



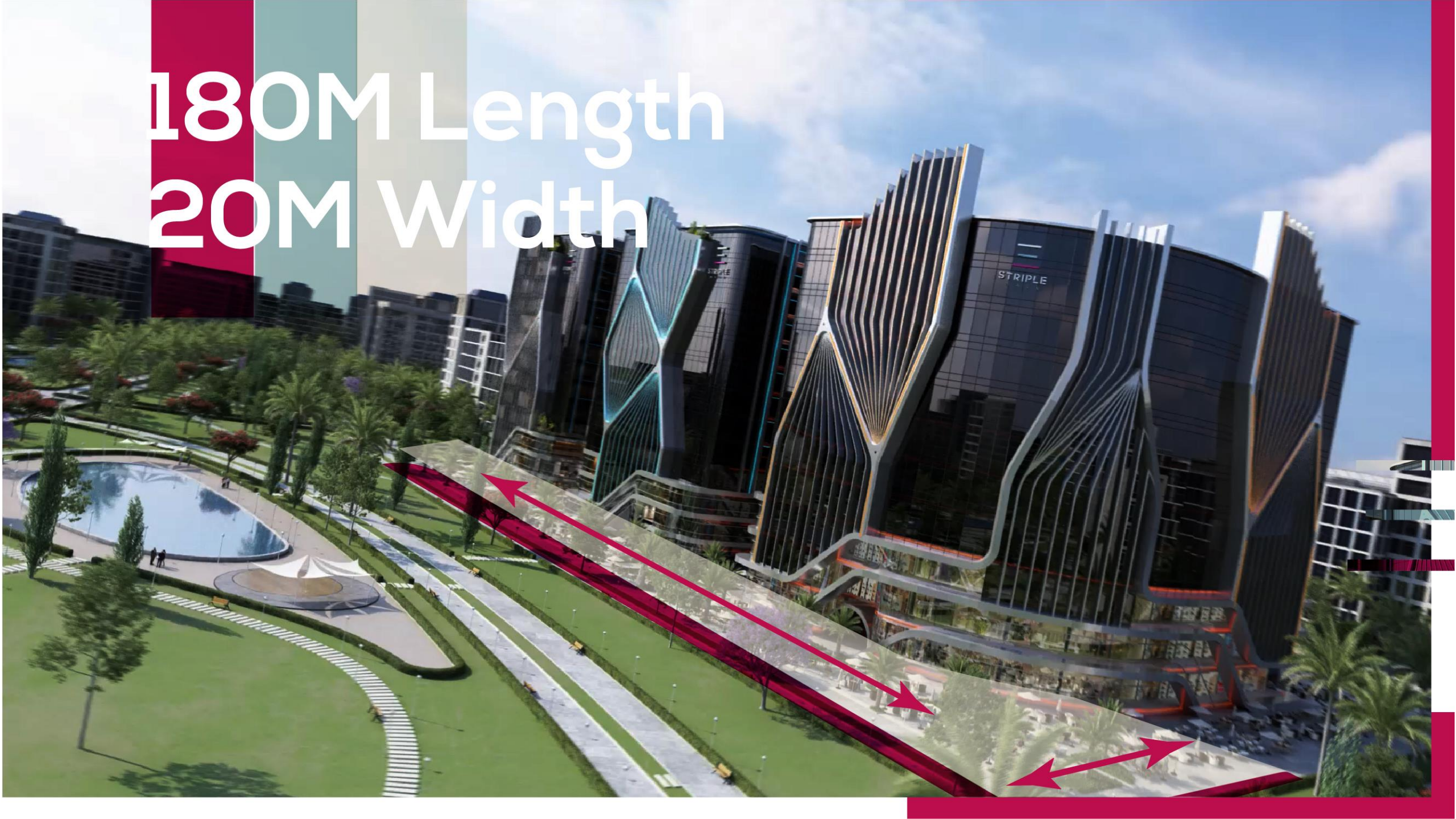
5700M2
OUTDOOR
AREA



7100 M2 Food Court area



180M Length
20M Width



The first Strip Center in New Administrative Capital

- **16,500** m2 Land Area
- **64,259** m2 Construction area
- On-Street Parking held to **72** Vehicles
- Basement m2 **4 floors 65,916**

Striple Walk

- Three Buildings - **55m** Building Height
- **13** Floors
- **16** Elevators
- **104** toilet
- **6** Escalators
- **180m** Building Width
- **8** Entrance (High **8m**) (Width **8.5m**)
- Atrium **19m x 4.20m**

The first strip walk in New Administrative Capital

- **3,600** m2
- **180m** Length
- **20m** Width

Striple Walk

- A Mixed-Use Strip Center
- 1,594 Units
- 1,260 Administrative Units
- 334 Commercial Units

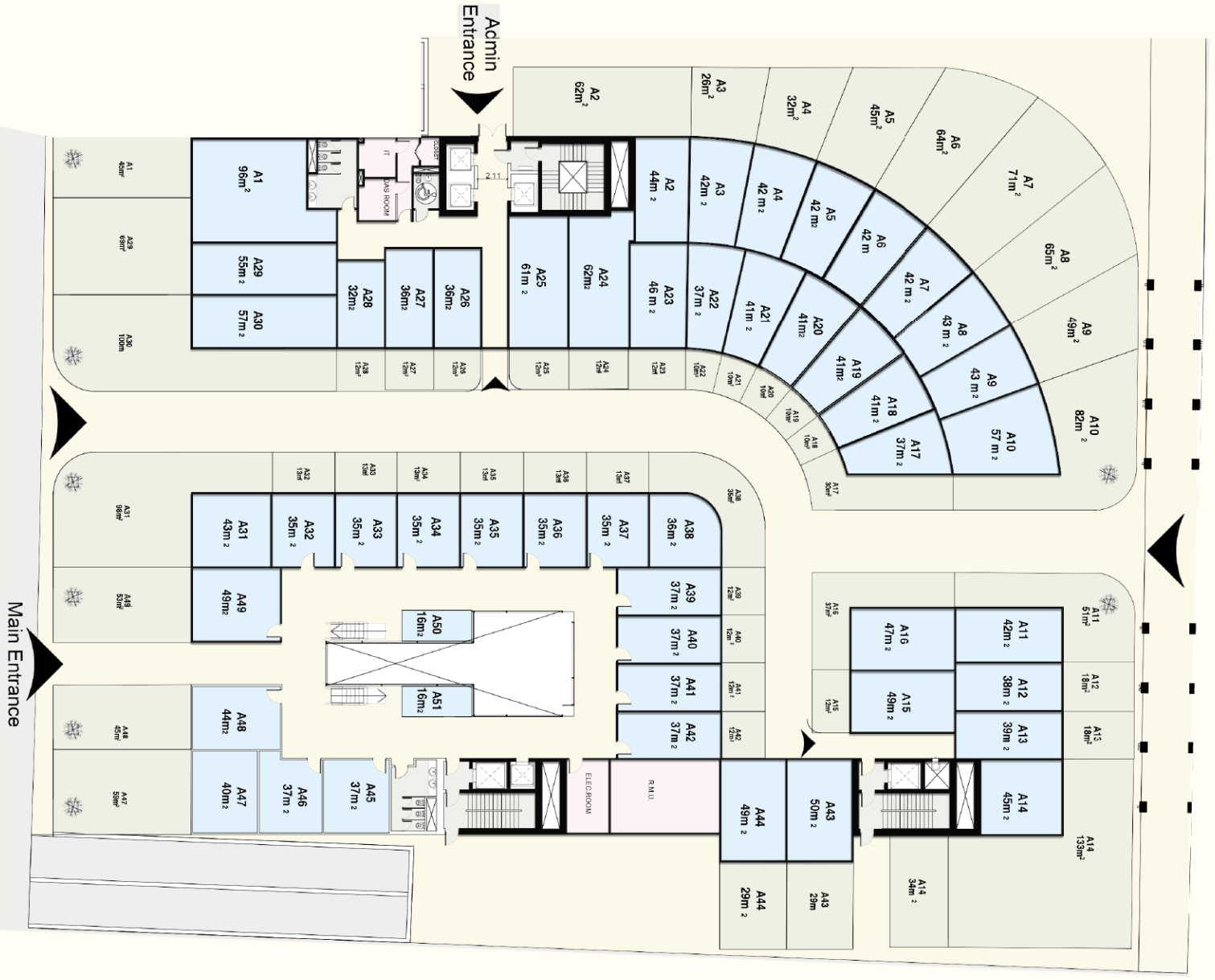
Basement Parking held to **1,464** Vehicles

- **5,790** m2 Outdoor Area
- **7,100** m2 Food Court

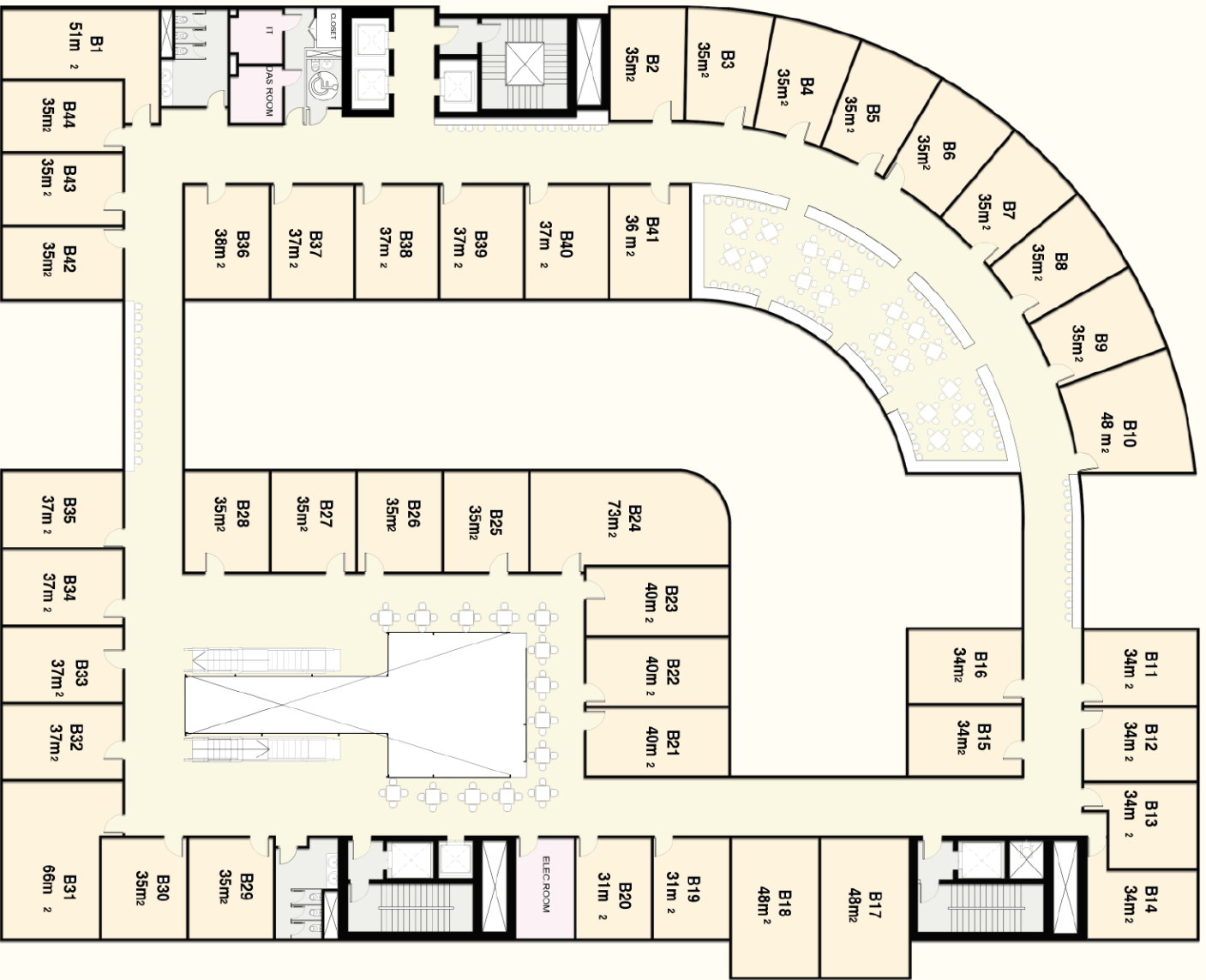


Master plan

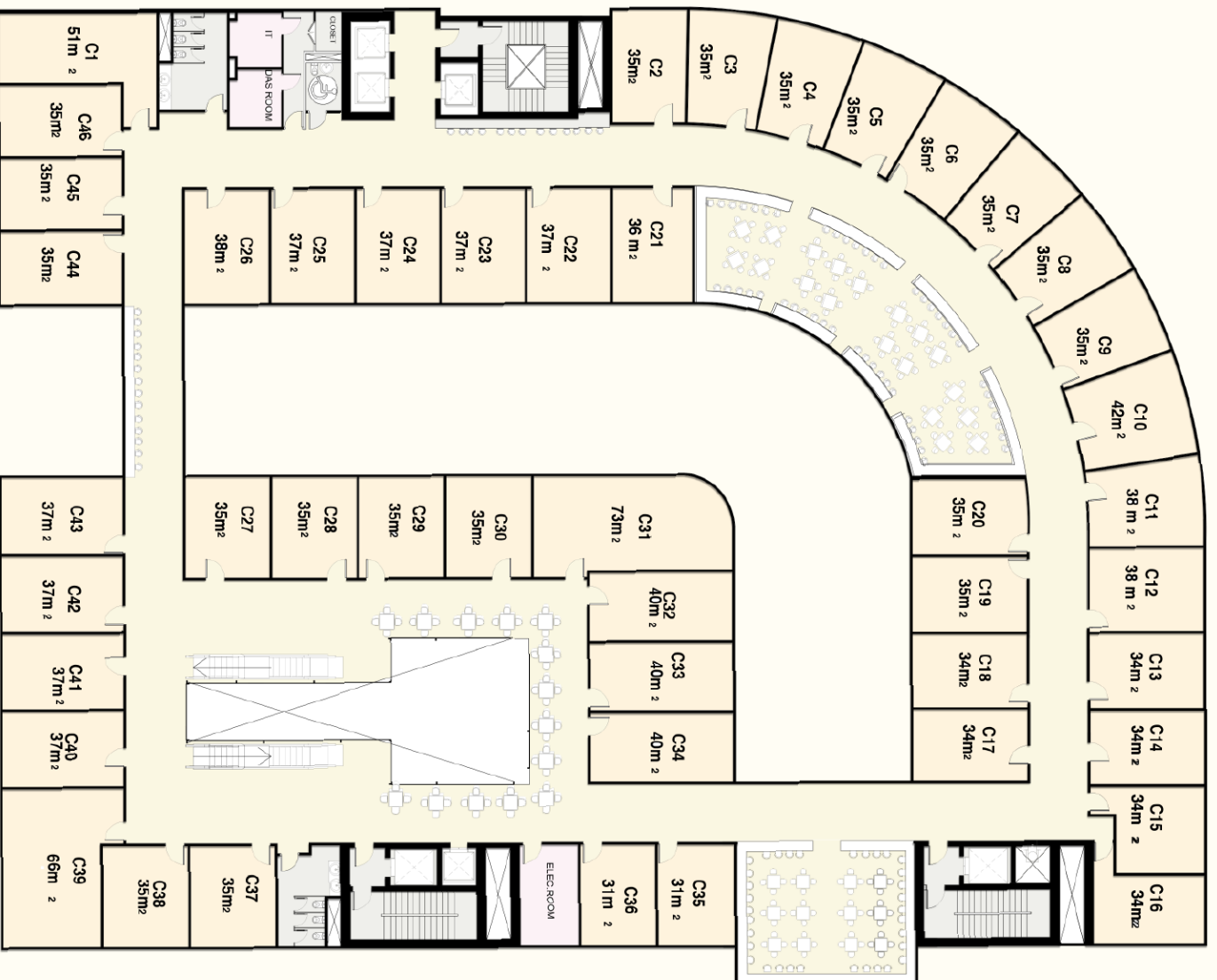




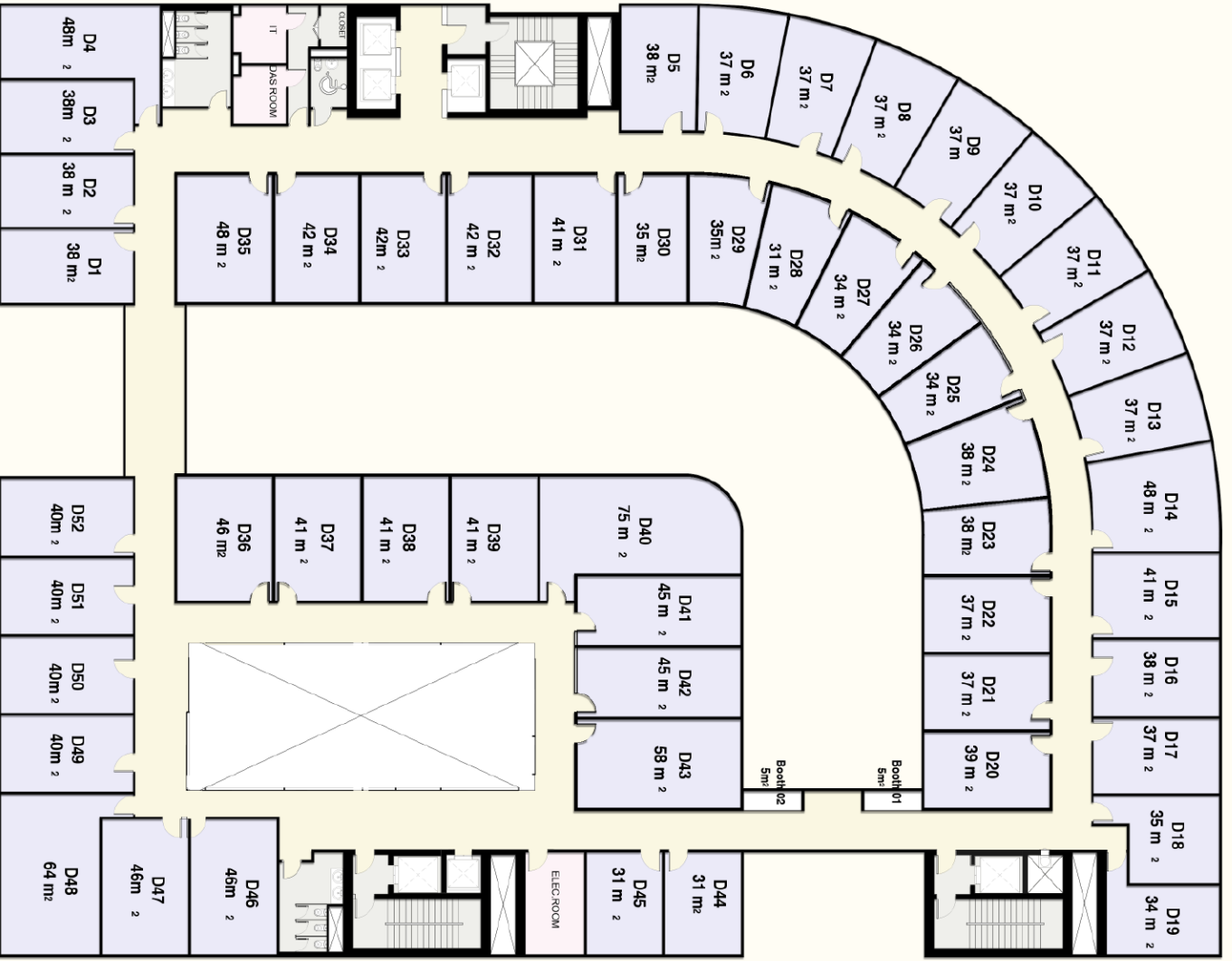
Ground floor



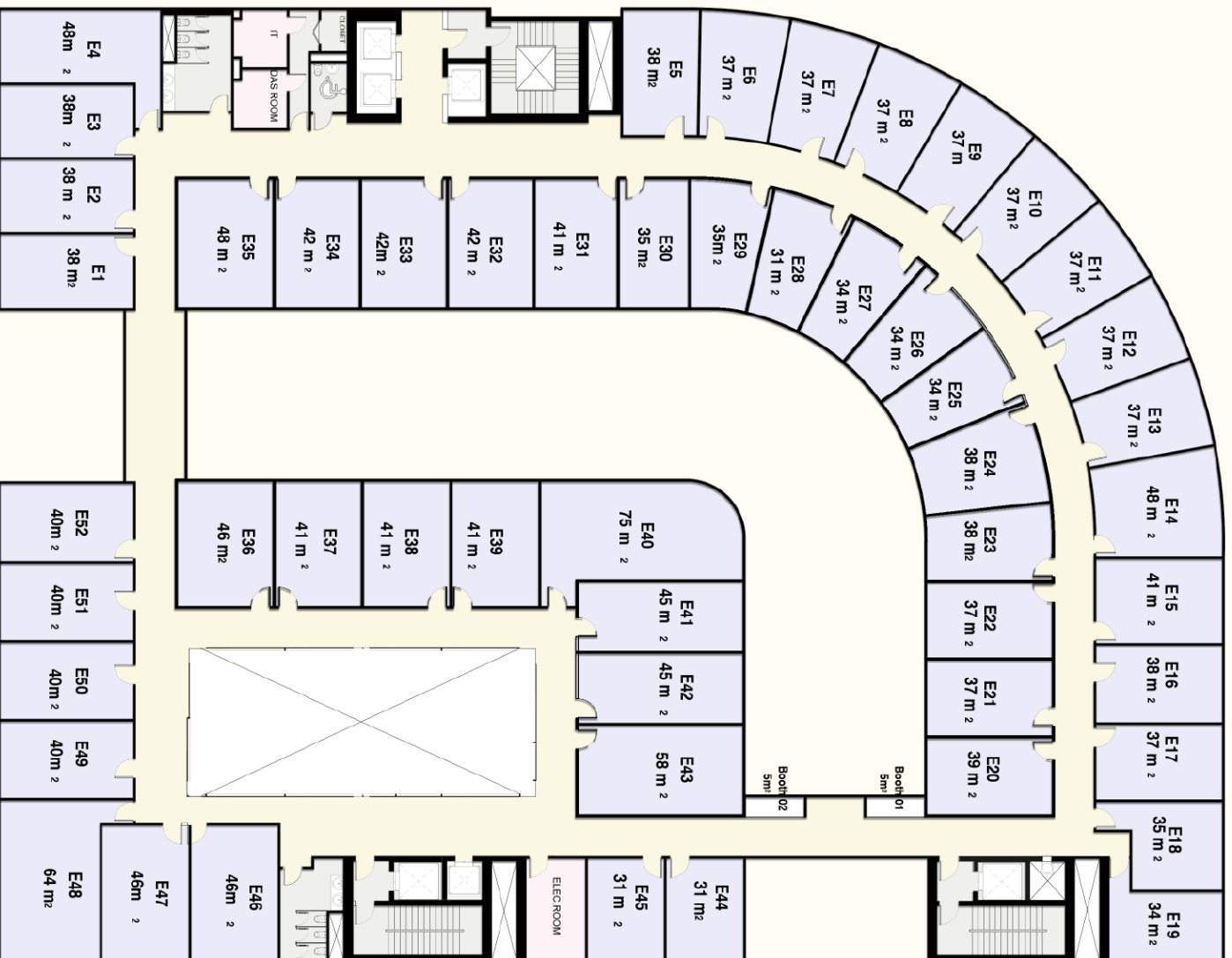
First floor



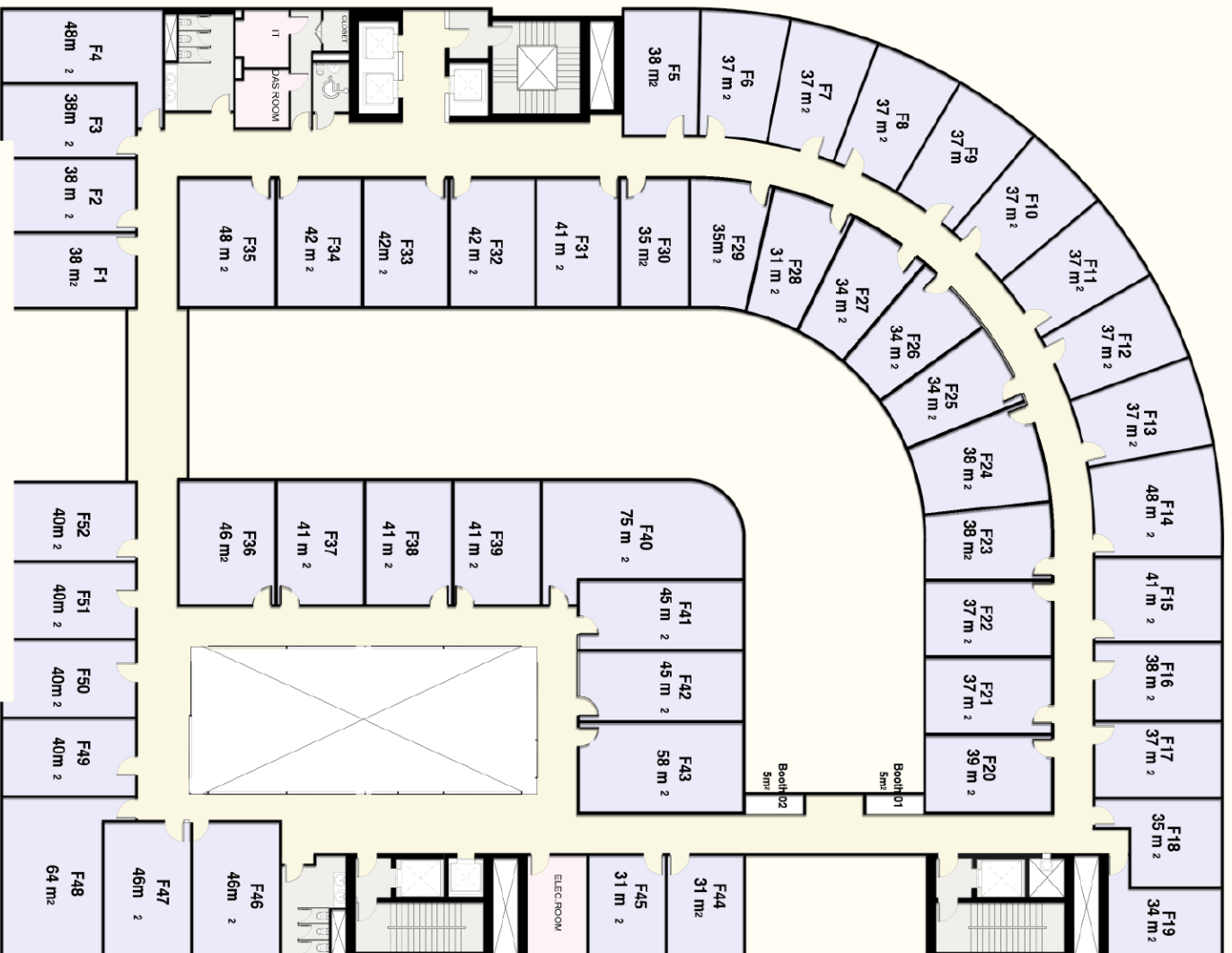
Second floor



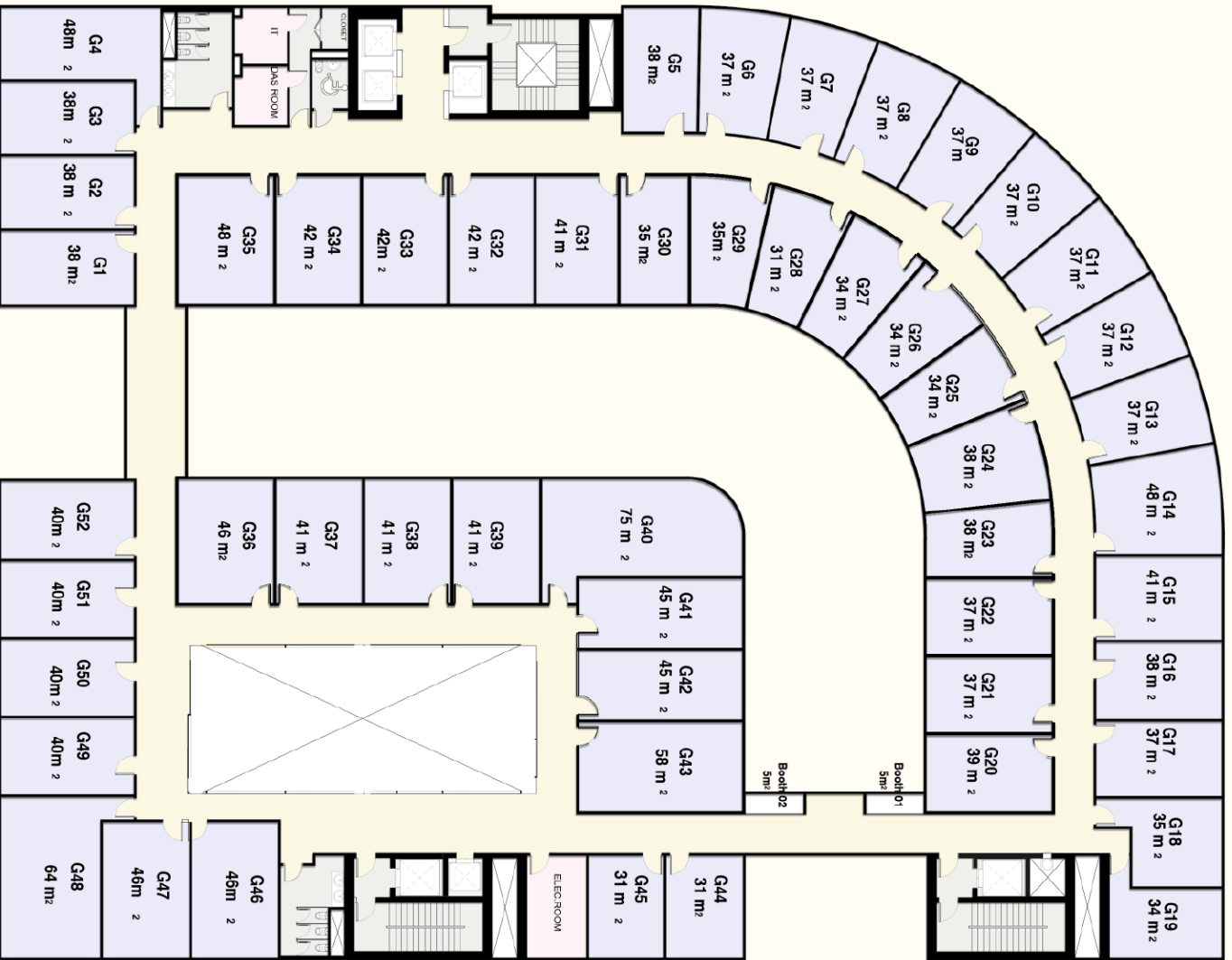
Third floor



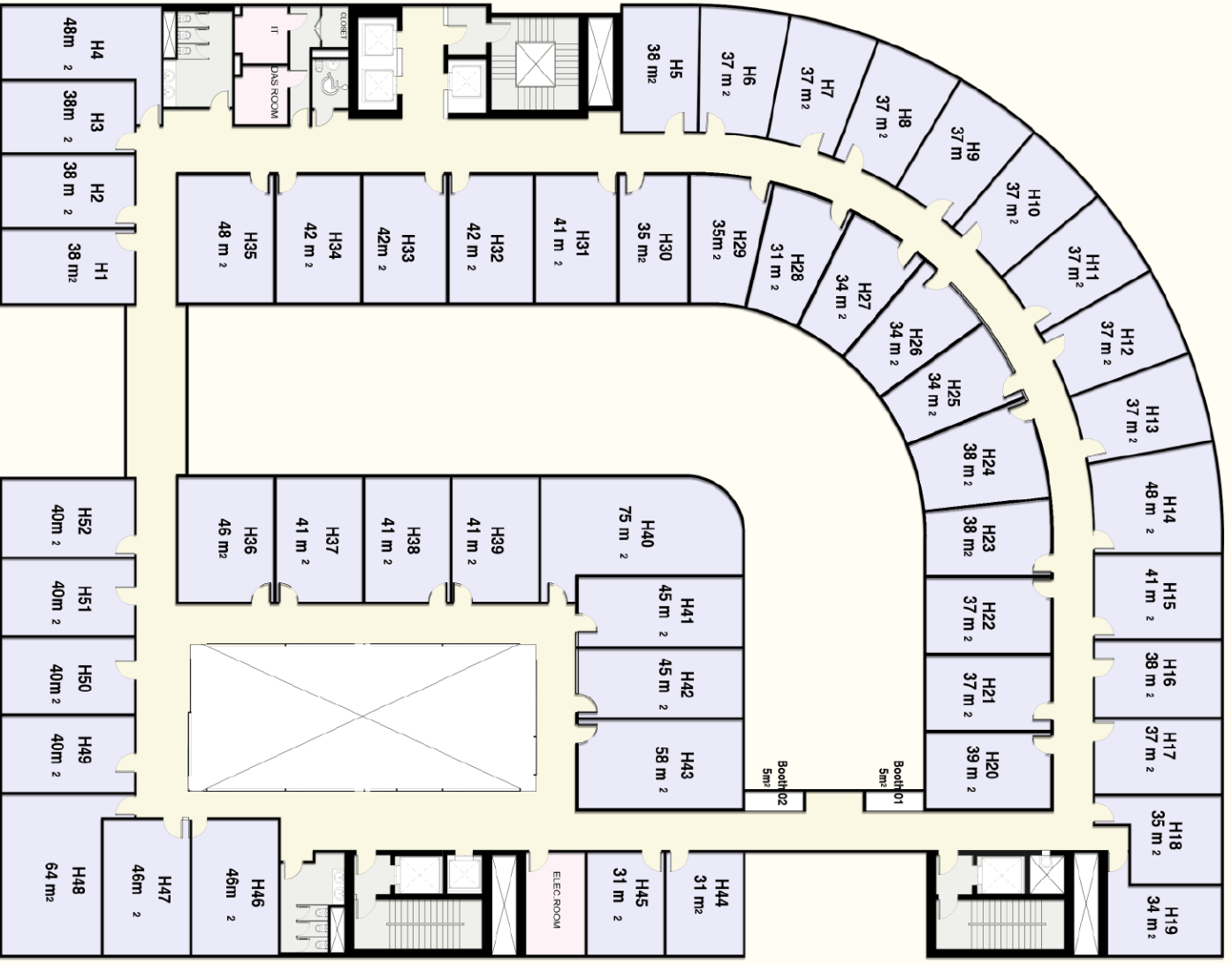
Fourth floor



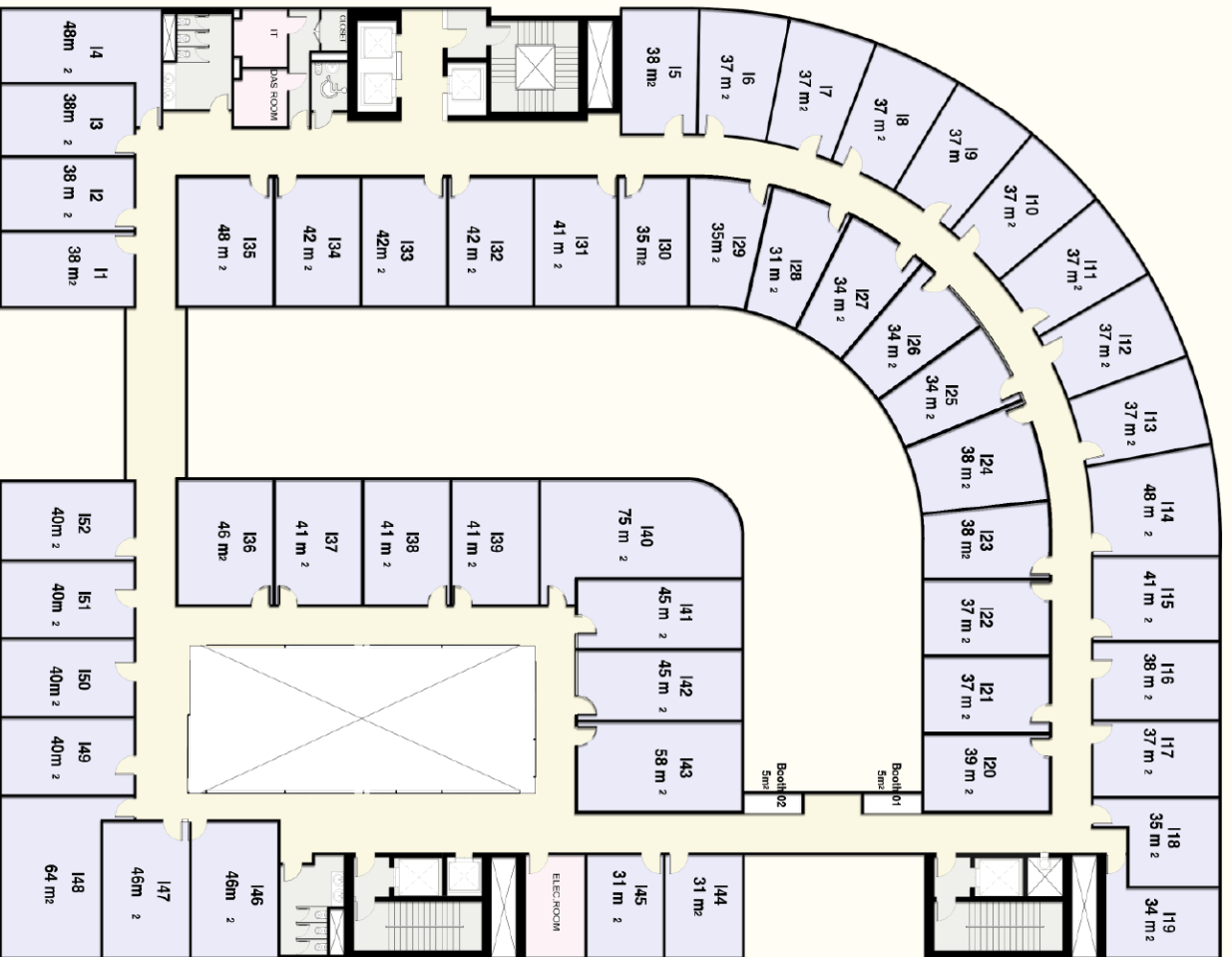
Fifth floor



Sixth floor

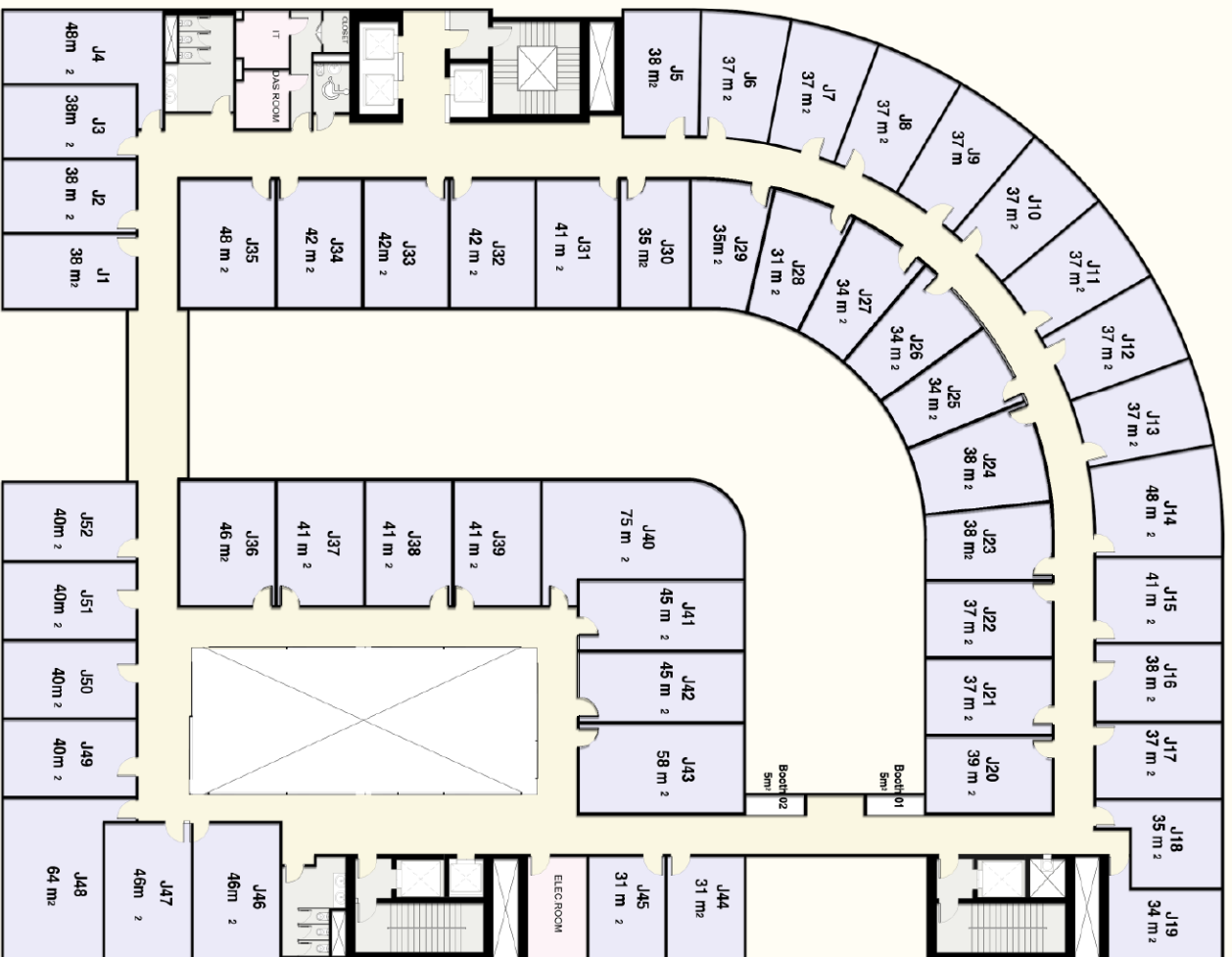


Seventh floor

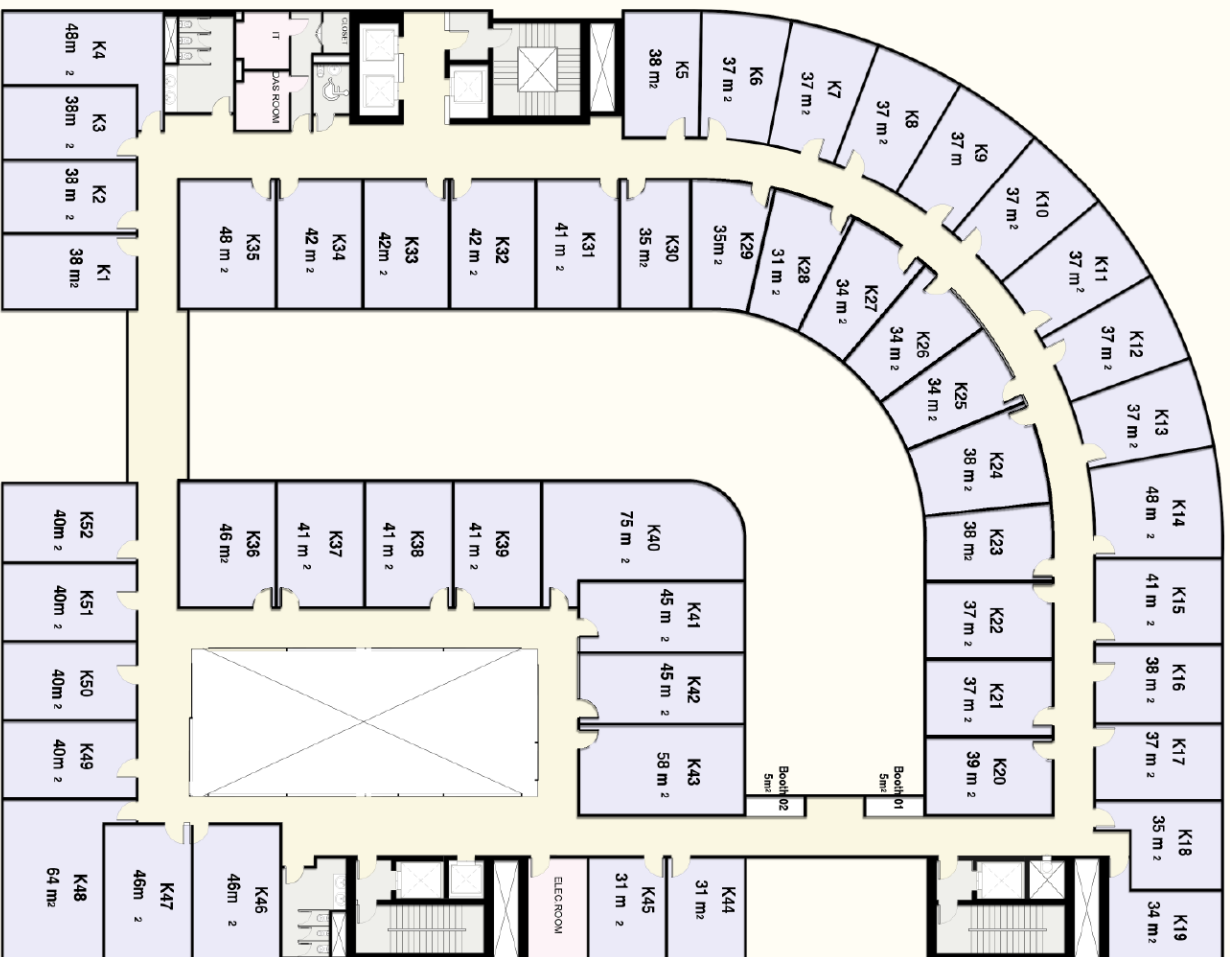


Eighth floor

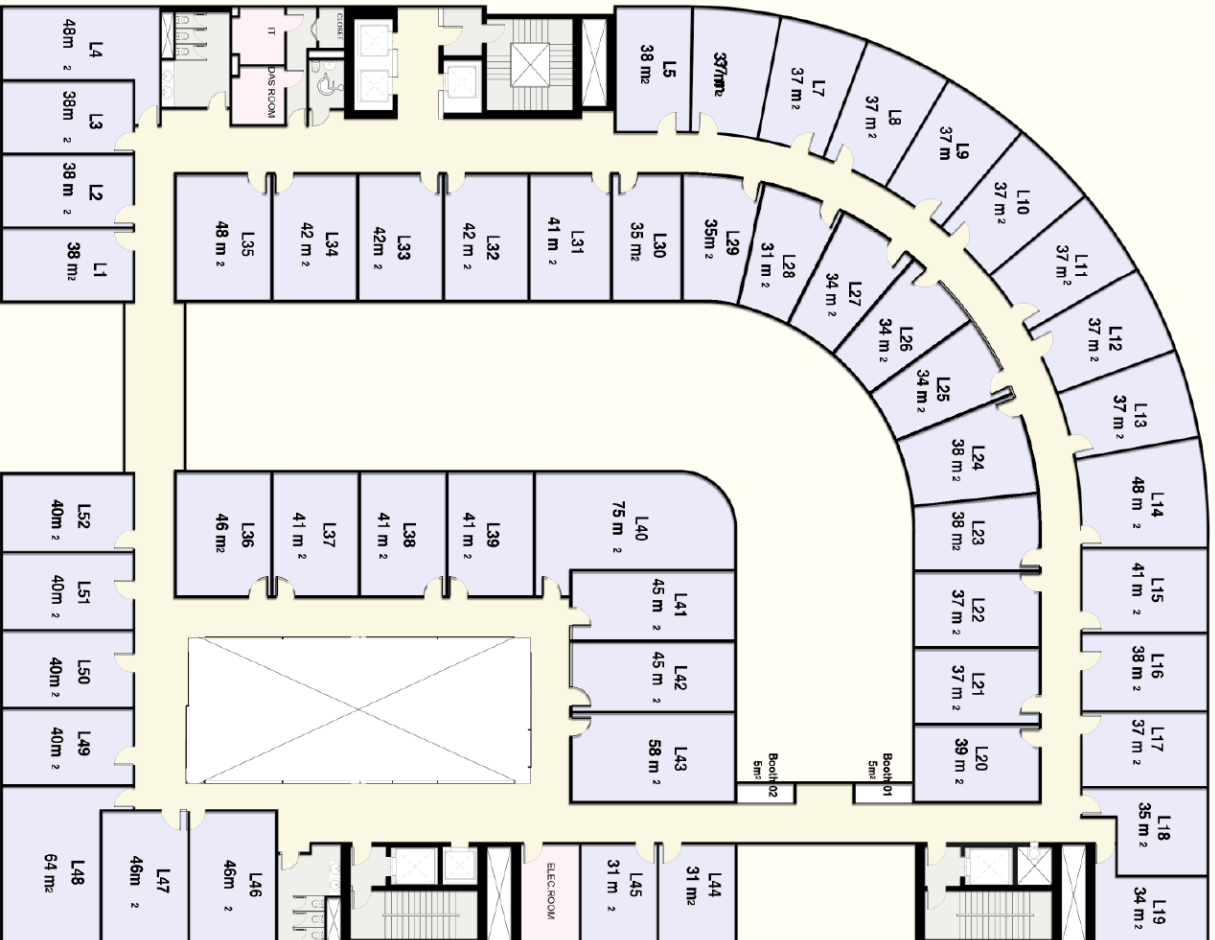
Ninth floor



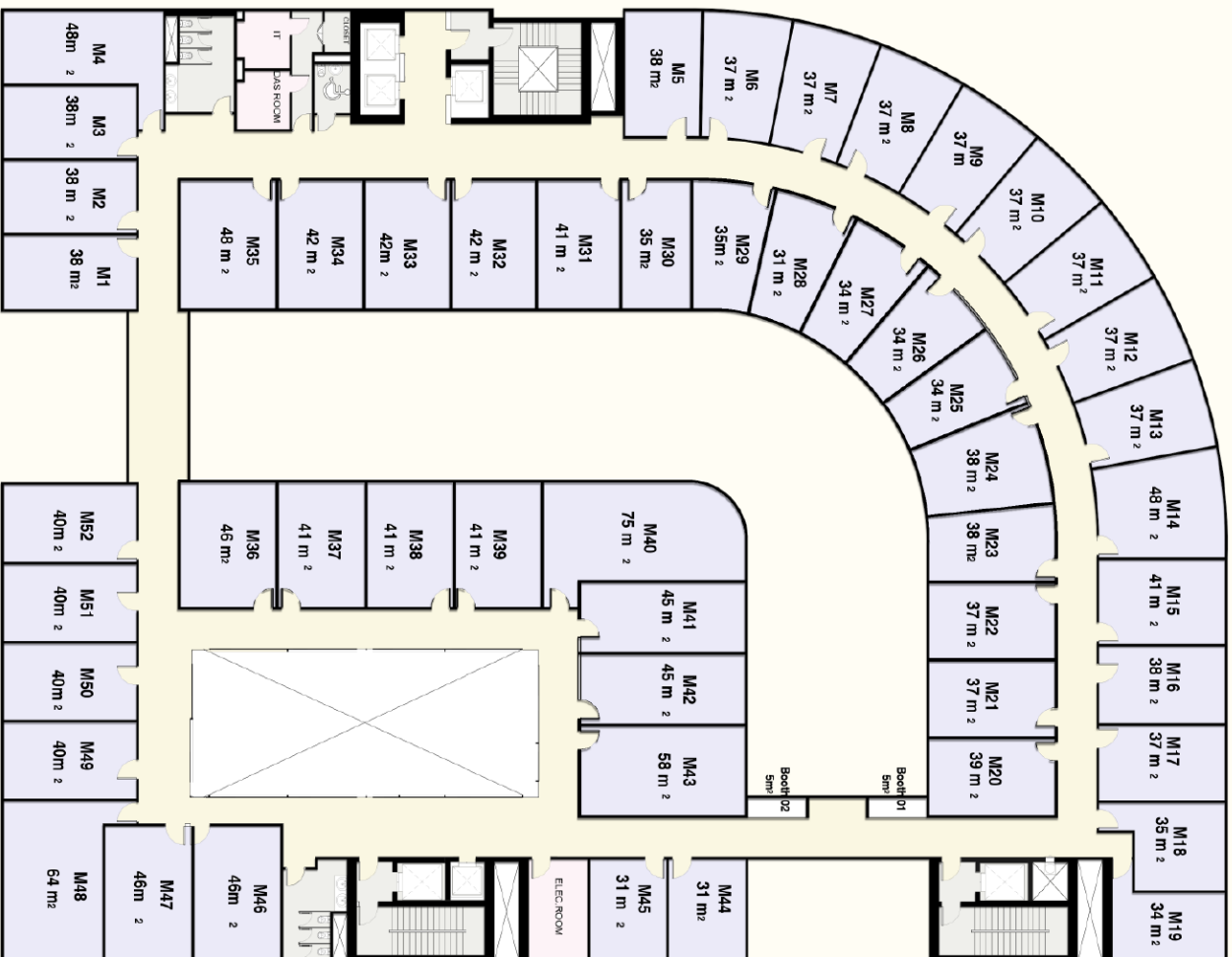
Tenth floor



Eleventh floor



Twelfth floor





STRIPLE

W A L K



CONTACT US
16889

- 🌐 Eightdevelopments.com
- 📘 [Eightdevelopments](#)
- 📍 [Eightdevelopments](#)